

CERTIFIED LAND CORNER RECORDATION

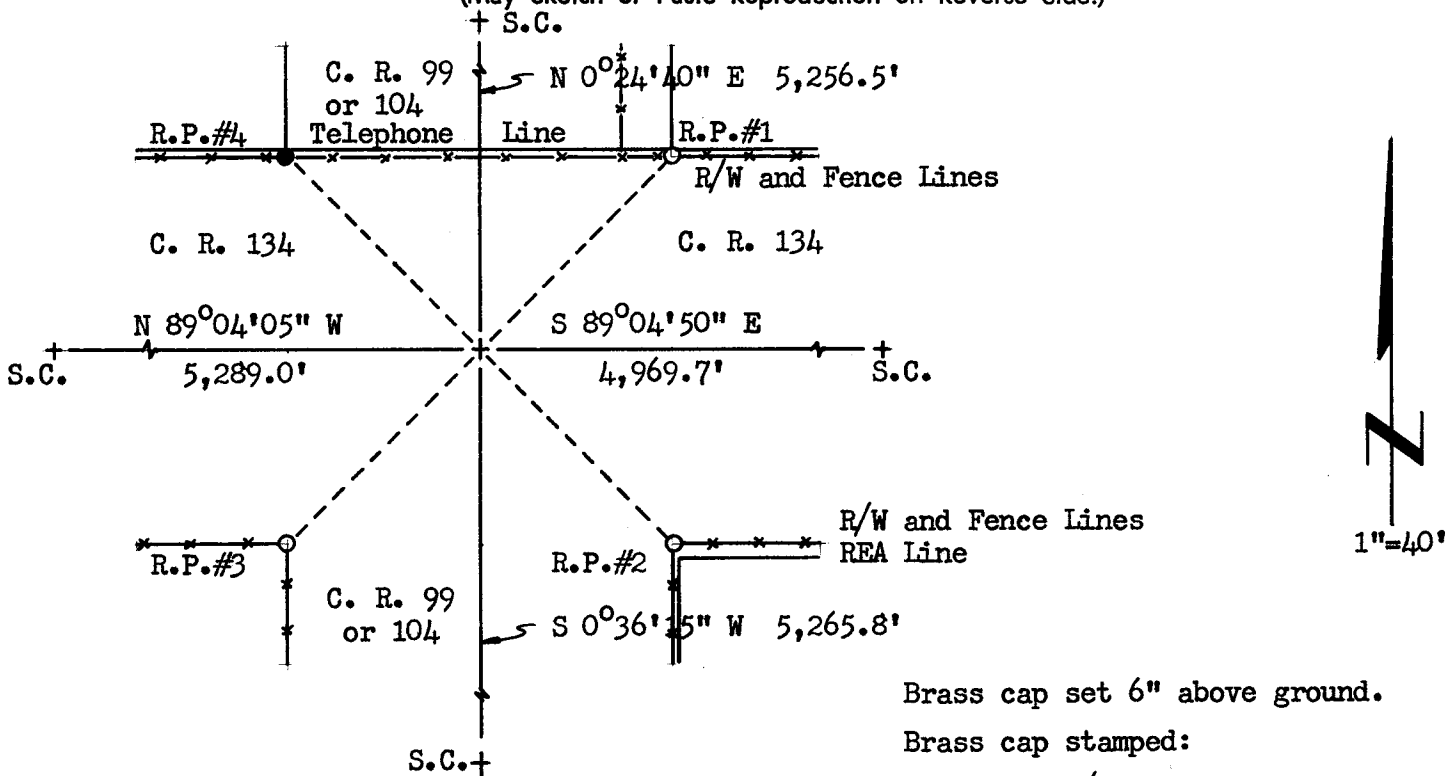
<p>LOCATION</p> <p>S.25 S.30 S.36 S.31 T.16N. R.65W., R.64W. 6th P.M.</p>	<p>DESCRIPTION OF CORNER EVIDENCE FOUND, AND ORIGINAL RECORD (If known)</p> <p>Obliterated corner.</p> <p>See "Report of Survey" for evidence used.</p> <p>G.L.O. record: Limestone, 20 x 10 x 4, Edwin James, 1870.</p> <p>(Corner lies on the 8th Guide Meridian)</p>
---	---

DESCRIPTION OF MONUMENT AND ACCESSORIES ESTABLISHED TO PERPETUATE THE ORIGINAL LOCATION OF THIS CORNER:

At the corner: No monument set.

Accessories: R.P.#1 - A 5/8" x 24" rebar w/ SurvKAP bears N 44°50'30" E, 56.15' distant.
 R.P.#2 - A 5/8" x 24" rebar w/ SurvKAP bears S 44°44'15" E, 56.23' distant.
 R.P.#3 - A 5/8" x 24" rebar w/ SurvKAP bears S 45°46' W, 56.41' distant.
 R.P.#4 - A 1 1/2" x 30" iron pipe w/ brass cap bears N 44°19'40" W, 56.83' distant. Witness post set 1.5' west of R.P.#4.

SKETCH, WITH COURSE AND DISTANCE TO ADJACENT CORNER IF DETERMINED IN THIS SURVEY.
 (May Sketch or Paste Reproduction on Reverse Side.)



Brass cap set 6" above ground.
 Brass cap stamped:
 C. R. R/W
 LS 519 1972

I, R.L. Hudson certify that I have carefully performed or reviewed the work done on the diagrammed corner as reported on this recordation form and approve the same.

R.L. Hudson Wyoming L.S. No. 519
 Signature of Surveyor Registration No.

STATE OF WYOMING,
 Office of Clerk and Recorder,
 County of Laramie

This "corner record" was filed for record on the 9th day of August, 1972, was noted on the cross-index plat and is assigned page No. 16-65, in book No. 16-65.

John B. Hillman
 County Official

Cross Index No. <u>16</u>	T. <u>64</u>	R. <u>6th</u>	Mer.
_____	T. _____	R. _____	Mer.
_____	T. _____	R. _____	Mer.
_____	T. _____	R. _____	Mer.
_____	T. _____	R. _____	Mer.
_____	T. _____	R. _____	Mer.
_____	T. _____	R. _____	Mer.

262174

The State of Wyoming }
County of Laramie } SS

This instrument was filed for record
at 8:59 o'clock P. M. on the
9th day of August
A. D. 19 72 and duly recorded in
Book _____ on page _____

John B. Williams

County Clerk & Ex-Officio Register of Deeds
_____, Deputy